



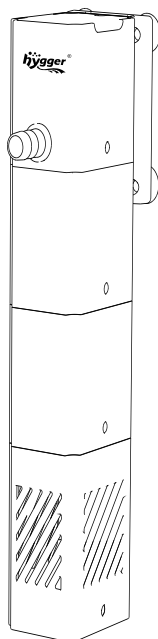
E-mail: distributor@hyggeraquarium.com

Website: www.hyggeraquarium.com

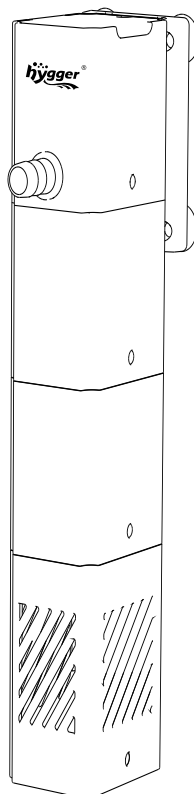


HG121 USER MANUAL

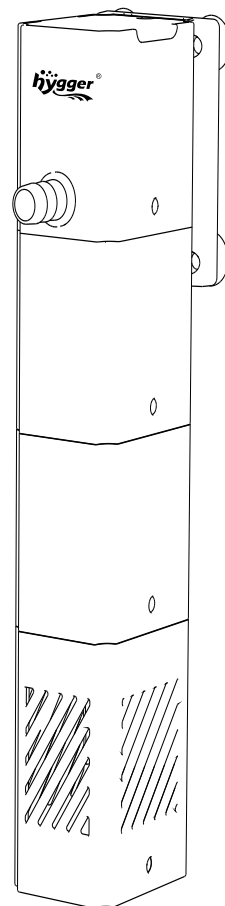
hygger Waterfall Aquarium Filter



8W



9W



15W

With three high-performance filter layers, the hygger Waterfall Aquarium Filter provides filtration, water purification, oxygen supply and water flow in the aquarium and is home to important bacterial cultures. Low voltage is safe to use.

1. PRODUCT FEATURES

- **Effective 3-layer filtration:** The 3-layer filtration provides mechanical filtration, water purification and beneficial bacteria culture.
- **Water circulation and water surface movement:** The fully submersible filter ensures good water circulation and water surface movement, which allows more oxygen to enter the aquarium water.
- **Quiet operation and safety:** The filter fitted with a DC 5V adapter is particularly quiet and offers a high level of safety.
- **Two types of water outlets:** Wide waterfall drainage and water drainage through a tube connection, and the flow rate can be adjusted as needed.
- **High-quality and durable:** The high-quality, durable filter pump is suitable for freshwater and saltwater aquariums.

2. PRODUCT PARAMETERS

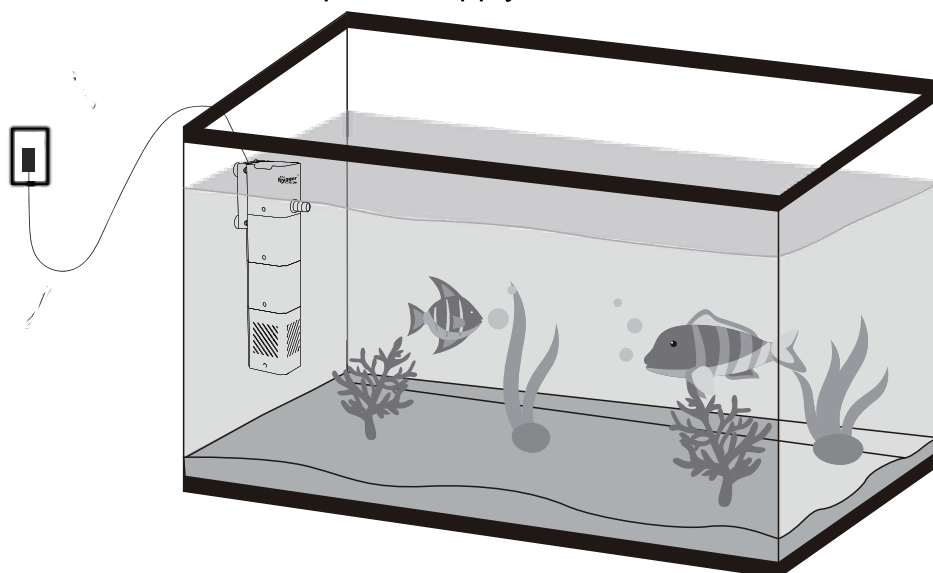
Model	Voltage	Power(W)	Flow max	Head max	Recommended tank size
HG121-8W	DC 5V	8W	61GPH (230L/H)	2.6ft (0.8m)	2~13Gallon (8~50L)
HG121-9W		9W	159GPH (600L/H)	3.6ft (1.1m)	13~35Gallon (50~132L)
HG121-15W		15W	211GPH (800L/H)	4.9ft (1.5m)	35~45Gallon (63~170L)

3. METHOD OF APPLICATION

The filter can be used in different ways.

Option 1

1. Connect the rotating outlet to the filter's water outlet.
2. Secure the filter to the aquarium glass using the suction cups.
3. Make sure that the filter is fully submerged in water.
4. Then connect the filter to the power supply.

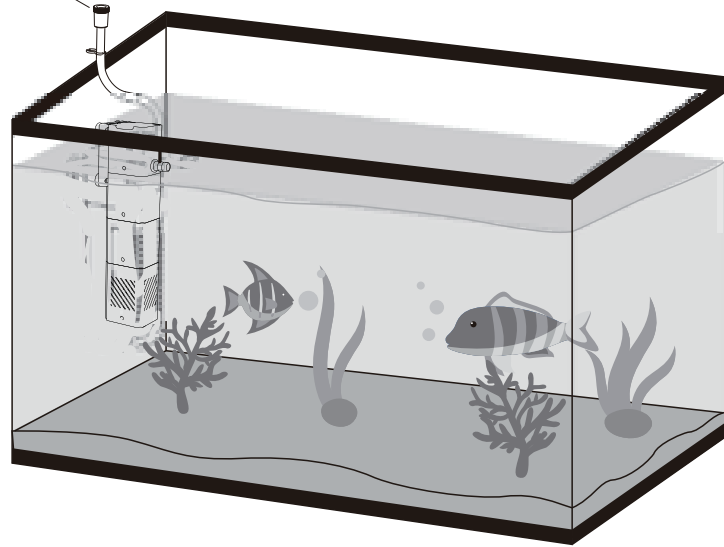


Option 2

With this option, air will be delivered to the filter outlet, creating bubbles that will help to oxygenate the water for fish in the aquarium.

1. Install the rotating outlet tube on the filter.
2. Place the filter in the aquarium as described under Option 1.
3. Make sure the air inlet regulator is not submerged in the water.
4. Connect the filter to the power supply.
5. Adjust the air volume by turning the air inlet regulator.

Air inlet regulator with air tube can only be used in combination with the adjustable water outlet. Turn the knob to the left or right to adjust the air volume.

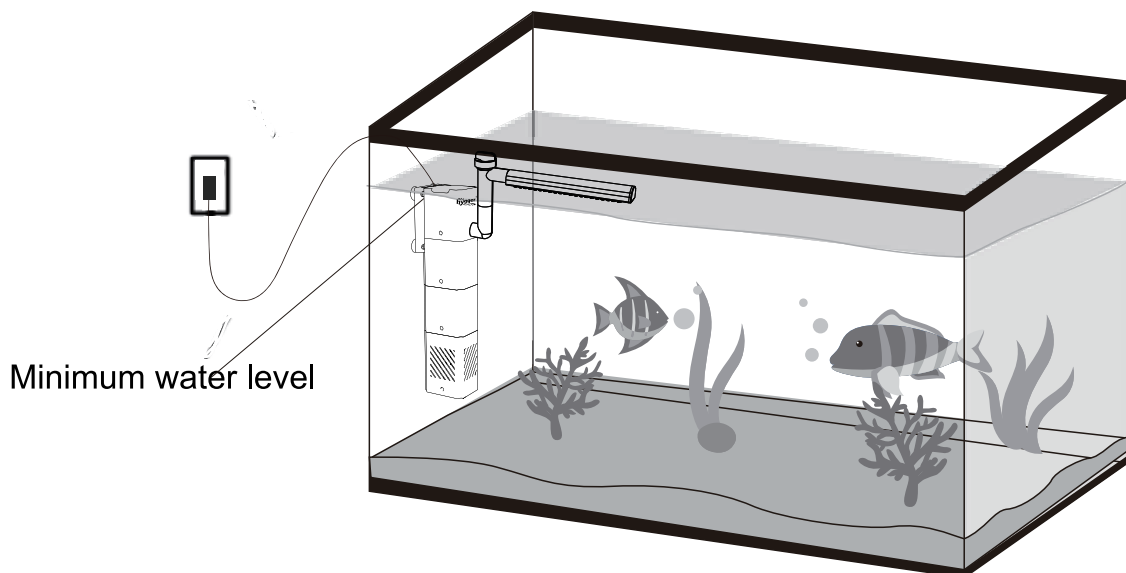


Option 3

When you choose this option, the water jet pipe sprays the water evenly onto the water surface and ensures more surface movement, which increases the oxygen input.

1. Connect the jet pipe to the water outlet as shown in the diagram.
2. Place the filter in the aquarium as described under Option 1, make sure that the jet pipe is horizontal.

Please note: Make sure the filter is placed above the minimum water level.



Note:

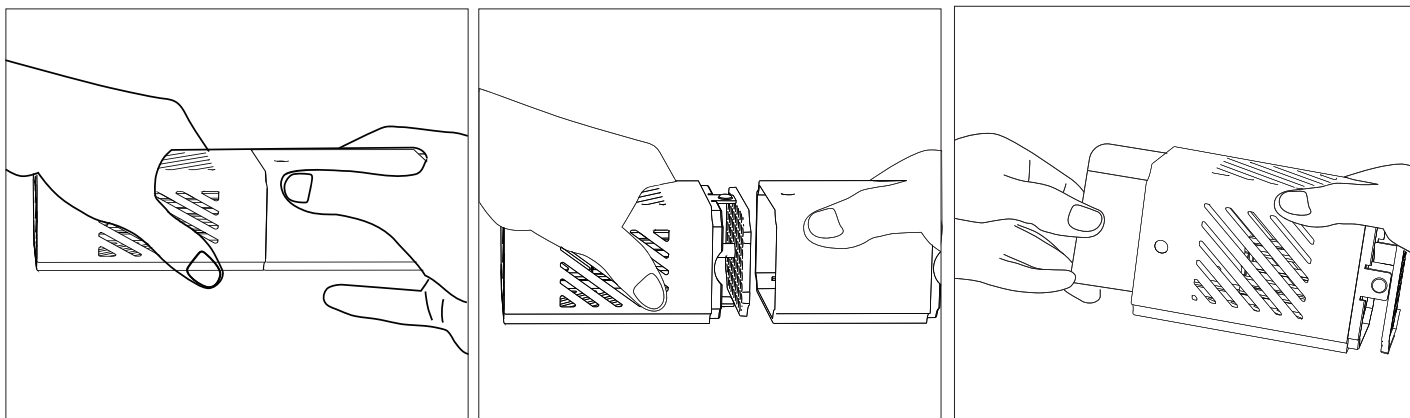
It is recommended to clean the filter sponge every two weeks to a month, depending on the number of fish, and how dirty or degraded the aquarium is.

It is not recommended to clean the ceramic balls. Please replace them when they deteriorate.

To replace the carbon sponge, please follow the instructions below:

1. Hold the filter basket with both hands and pull it back.
2. Remove the sponge for replacement and re-install it after replacement.

Reminder: If the water output is significantly reduced, please replace the sponge in time to ensure that the aquarium remains in the best condition.



① Hold

② Pull

③ Take out sponge

4. TROUBLESHOOTING

Trouble	Solution
The pump is not working	The filter is disconnected from the power supply
	The mains voltage does not match the filter voltage
	Inlet or outlet is blocked
	Impeller or rotor is damaged
Low water flow	Mains voltage is lower than rated voltage
	The inlet or outlet are partially blocked
	The filtration system is dirty
Filter is making noise	The inlet is partially blocked
	The water level is lower than the filter inlet; Air is entering the filter and causing noise
	The rotor is worn (please replace)

5. IMPORTANT SAFETY CAUTIONS

1. When operating the appliance, please observe the rated voltage and rated frequency according to the label and operating instructions.
2. Install a residual current device with a rated output of 10mA or 30mA on the main power supply.
3. The cable on this appliance cannot be replaced. If the cable or plug shows signs of damage or wear, do not continue to use this filter. Do not attempt to shorten the cable or remove the plug. Failure to do so may damage the filter.
4. If you notice any unusual odors or noises in connection with the filter, disconnect the appliance from the power supply immediately and check it.
5. Your hands and the plug must be dry when plugging and unplugging the appliance. Plugging or unplugging with wet hands can lead to an electric shock.
6. The filter must be disconnected from the power supply before installation or cleaning work. To do this, do not jerk the cable, but carefully pull the plug out of the socket.
7. Protect the filter accordingly. If the appliance has suffered an impact, check it for possible damage. If you find any cracks, the filter must not be put back into operation and must be disposed of.
8. Do not allow the filter to run dry to prevent damage to the rotor and overheating of the motor.
9. Do not operate or store at freezing temperatures.
10. Ensure that the filter is not clogged. Otherwise the water flow rate will drop and the impeller will no longer work properly.
11. Do not use in flammable or corrosive liquids. Please only operate the filter at water temperatures below 40 °C

6. DISPOSAL

Do not dispose of this product as unsorted municipal waste. Collection of such waste separately for special treatment is necessary. This product must not be disposed of together with the domestic waste. This product has to be disposed of in an authorized place for recycling electrical and electronic appliances. By collecting and recycling waste, you help save natural resources, and make sure the product is disposed of in an environmentally friendly way.

7. HYGGER LIMITED MANUFACTURER'S WARRANTY

We offer the end user of this product a manufacturer warranty of 3 (2) years from the date of sale if this product was purchased from a hygger®-authorised specialist dealer.

Retain receipt for any future warranty claim. Conditions apply. Products are guaranteed by hygger® Aquatic Supplies to the original purchaser against defective material and workmanship under normal use for a period up to 3 (2) years from the date of the original purchase through an Authorized Dealer. Refer to the User Manual included with your product for specific warranty details.

Products have no warranty if:

- 1.) The product has been serviced, modified or tampered with by anyone other than hygger® Aquatic Supplies.
- 2.) The product has been abused or damaged (including broken or cracked bulbs), and/ or.
- 3.) The product has been transported without proper packaging.
- 4.) The product was purchased from an Unauthorized Reseller.

WARRANTY LIABILITY DISCLAIMER

In no event will hygger® be liable for any consequential or incidental damages, including but not limited to, lost aquatic life, personal injury, property damage, equipment damage, lost profits, lost wages, lost savings, lost income, etc., arising out of the use of any hygger® products.

1.0. Terms and Conditions of Warranty.

- 1.1. hygger® warrants to the purchaser, for 3 (2) years from date of original purchase through an Authorized hygger® Reseller, free to repair or replace parts where fault is found due to defective materials or faulty workmanship and where goods do not operate in accordance with the instructions.
- 1.2. All claims for repair or replacement must be made at place of purchase.
- 1.3. Only the direct purchaser is entitled to warranty claims against us and these are not transferable without our consent.
- 1.4. The original and dated Proof of Purchase (receipt) must be supplied with all goods claims. Please also provide this Guarantee where possible.
- 1.5. Wear parts (e.g.: seals, suction devices, axes, pump wheels, light sources, pH electrodes, filter media, such as filter cartridges, as well as UVC burners), glass damage and the opening of the product, as well as structural changes or the use of non-hygger® original parts are excluded from the guarantee.
- 1.6. All goods subject to claim under Guarantee should be prepared for transportation in the original packaging or other comparable packaging which offers the same degree of protection and hygger® must incur no costs from the shipment.
- 1.7. Where claims on inspection reveal goods are in normal working order, hygger® will request reimbursement of all reasonable costs incurred.
- 1.8. Warranty claims do not exist in the case of only insignificant deviations from the agreed or customary condition or usability, e.g. insignificant deviations in colour, dimensions and/or quality or performance characteristics of the products.
- 1.9. Our warranty obligation extends only to the delivery of newly manufactured products. Unless otherwise agreed, used products are sold as seen, excluding any warranty.

For more warranty information, please see the hygger website.

8. PACKING LIST

- 1x Filter with cord
- 4x Suction cup
- 1x 13.8inch(35CM) air tube with airflow regulator
- 1x Rotating outlet
- 1x Water outlet nozzle
- 1x Water jet pipe
- 1x User manual

9. CONTACT INFORMATION

Distributed by: Hygger Aquarium, Inc.
13941 Magnolia Ave, Chino, CA 91710

E-mail: distributor@hyggeraquarium.com

Website: www.hyggeraquarium.com

Trademarks of Shenzhen Mago Trading Co., Ltd
Bantian Group Business Center, Longgang,
Shenzhen City, China
All Rights Reserved

Made in China